



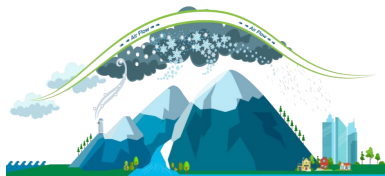
Santa Ana River Watershed Weather Modification Pilot Program

What is the Weather Modification Pilot Program?




In 2020, the Santa Ana River Watershed Project Authority (SAWPA) conducted a study on the economic and technical feasibility of implementing a weather modification, also known as cloud seeding, in the Santa Ana River Watershed to increase water supply in the region. With this study, SAWPA will now conduct a 4-year weather modification pilot program to gather the necessary data to ensure the program is feasible and can be implemented in the watershed.

What is Cloud Seeding?

Cloud seeding is a type of weather modification used to increase the amount of the precipitation, including snow or rain, during the storm season. This process works through releasing particles of silver iodide into clouds, which increase the chances of droplet condensation.



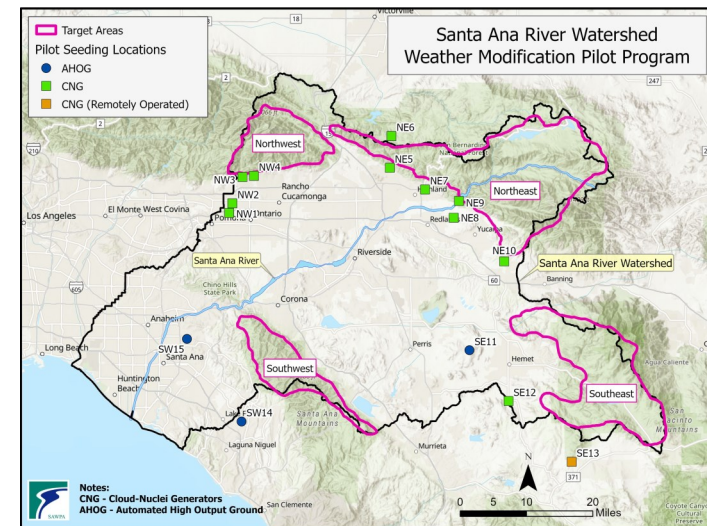
Benefits of Cloud Seeding

		
Increases precipitation by 5-15 percent	Increases snowpack	Increases water supply for the region

Target Areas

The map shown on the right provides the locations of the 15 ground-based seeding units for the four target areas including northwest, northeast, southwest, and southeast.

These units include Cloud Nuclei Generators (CNGs) and Automated High Output Ground Seeding (AHOGS) and release silver iodide particles, which rise into storm clouds.





Pilot Program Validation


A key component of the Pilot Program is the validation of the benefits of cloud seeding in the form of additional precipitation, including snowfall and stream flows. SAWPA has contracted with Desert Research Institute (DRI), a nonprofit research arm of the Nevada System of Higher Education to perform the study. The validation will involve a target and control approach where a control area without seeding will be compared to the four target seeding areas.




How Cloud Seeding Works

- 

Storms come into the watershed region bringing in clouds and moist air flowing over the mountains, cooling and creating clouds composed of supercooled water droplets.
- 

Silver iodide particles mixed with acetone are vaporized and released into the atmosphere using ground based seeding systems.
- 

Silver iodide particles rise into cold, high-altitude air; moisture in the air condenses to form ice crystals on the particles.
- 

By freezing of droplets and deposition of vapor, ice crystals form and grow progressively larger, forming snowflakes large enough to precipitate to the ground.

Program Schedule

2021 Ground Seeding Site Analysis	Feb 2022 CEQA	April 2023 Prop 1 Round 2 Grant
	November 2023 Project Begins	
	2021—2027 Public Outreach	

For more information about the Weather Modification Pilot Program, visit sawpa.org/santa-ana-river-watershed-weather-modification

Cloud Seeding Method

Ground-based seeding consists of two methods, called Cloud Nuclei Generators (CNGs) and Automated High Output Ground Seeding (AHOGS).

CNGs are manually operated and burn a solution of silver iodide and acetone, creating a continuous plume of seeding material that covers a broad area over mountainous terrain. AHOGS are remotely operated units, burning in-place flares that rapidly release a high concentration of silver iodide and are ideal for seeding convective bands with high concentrations of liquid water and vertical updrafts.



Cloud Nuclei Generators (CNGs)



Automated High Output Ground Seeding (AHOGS)

Cloud Seeding Safety

Based on decades of experience, the use of silver iodide for the purpose of cloud seeding has been shown to be safe for people and the environment. The potential environmental impacts of silver iodide have been studied extensively and represents a negligible risk to the environment.

Fast Facts:

- In over 50 years of research, there have been no measurable human or environmental effects caused by silver iodide.
- The concentration of silver in rainwater and snow from a seeded cloud is nearly 1,000 times less than the Environmental Protection Agency (EPA) standard.



About SAWPA

SAWPA is a Watershed Agency Focused on Regional Water Issues

Formed originally in 1972 as a planning agency, the Santa Ana Watershed Project Authority (SAWPA) was created to help resolve interagency conflicts and address regional water issues in the Santa Ana River watershed. SAWPA works to solve issues related to water supply reliability, water quality improvement, recycled water, wastewater treatment, groundwater management, and brine disposal.

SAWPA Supports its Member Agencies with Water Planning

SAWPA is a Joint Powers Authority comprised of five member agencies that supports water resource planning.

- Eastern Municipal Water District
- Inland Empire Utilities Agency
- Orange County Water District
- San Bernardino Valley Municipal Water District
- Western Municipal Water District

SAWPA seeks to create and facilitate strategic partnerships with organizations pursuing common interests with water sustainability. SAWPA's regional leadership provides a model of collaboration by utilizing integrated solutions.



Stay Informed

Scan the QR code to learn more about the Weather Modification Pilot Program.



For More Information or to Request a Presentation

Rachel M. Gray

Water Resources and Planning Manager

weathermodification@sawpa.org

(951) 539-0261

Connect With Us!

Sawpa.org

(951) 354-4220

11615 Sterling Avenue

Riverside, CA 92503



[@sawpa_water](https://twitter.com/sawpa_water)



[@SAWPATUBE](https://www.youtube.com/@SAWPATUBE)