



Inland Empire Brine Line Master Plan

David Ruhl, Engineering Manager
Project Agreement 24 Committee
August 3, 2021 | Item No. 6.A.

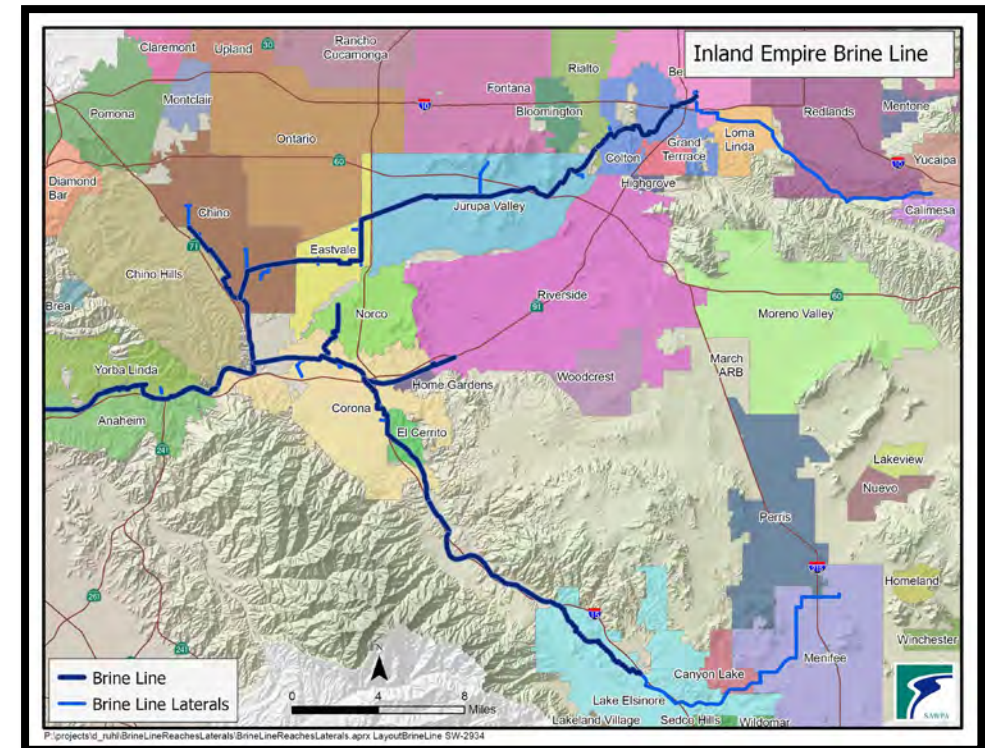
Brine Line Master Plan

Recommendation:

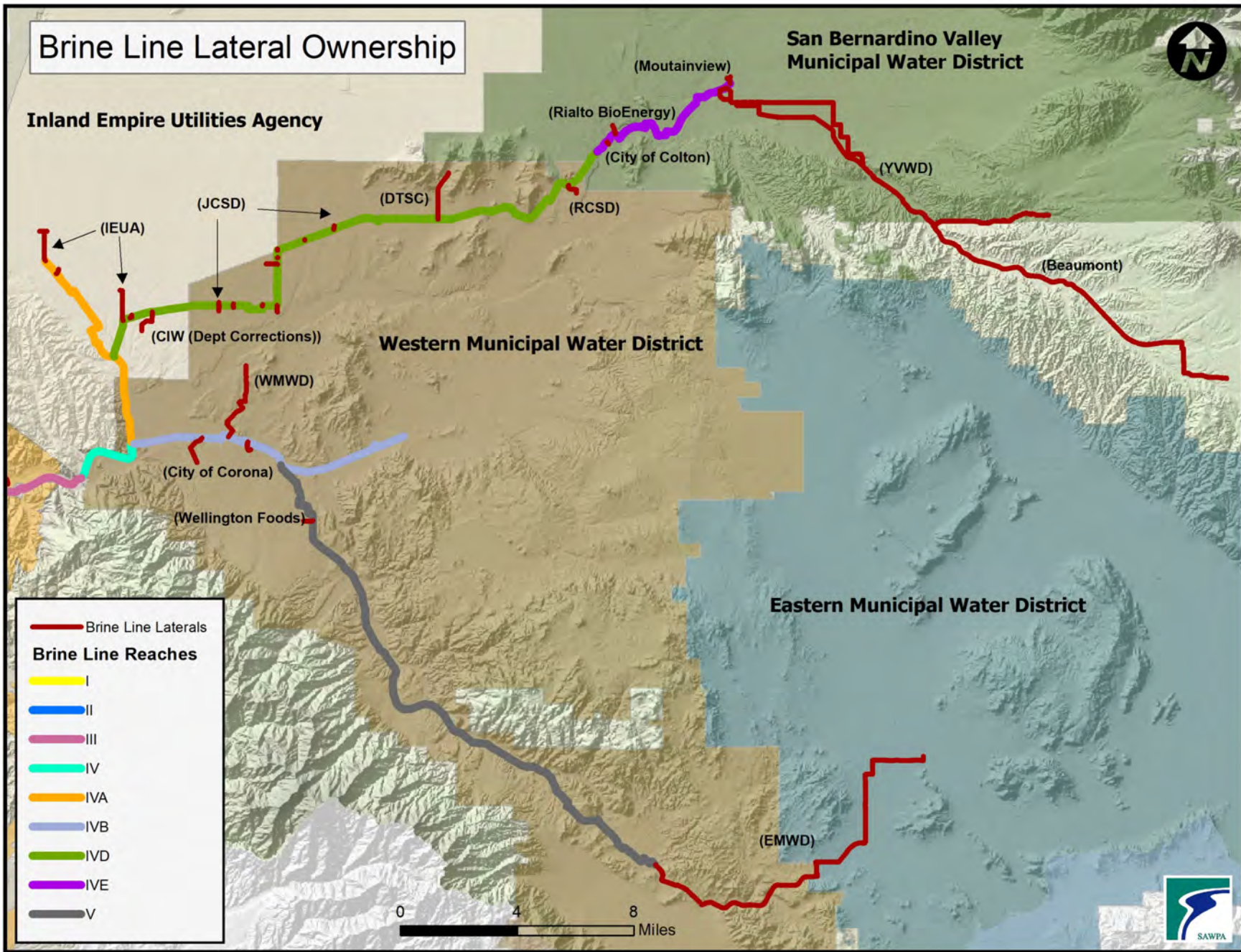
- Direct staff to prepare a scope of work for an Inland Empire Brine Line Master Plan.

Brine Line Master Plan

- Long-term planning document that addresses facility needs
- Purpose is to determine how to manage and implement the growth and expansion of the Brine Line to best serve the watershed and our Member Agencies
- Benefits
 - Consistency in decision making
 - Ability to make informed decisions
 - Focus resources and prioritize projects
 - Promote economic development
 - Maintain System Reliability
 - Accommodate future growth
 - Meet future regulatory requirements



Brine Line Lateral Ownership



Brine Line Master Plan

- Scope of Work
 - Coordination with Member Agencies, review existing plans
 - System hydraulics
 - Future growth projections
 - Design criteria
 - Environmental, regulatory, and operational constraints
 - Engineering and operation resiliency
 - Pay for laterals, projects, and system expansion
 - Capacity management, and long-term planning efforts to reach 30 MGD capacity



Questions?